

# Radley®

## 20V MAX AIR COMPRESSOR KIT

### OWNER'S MANUAL



3 Year Limited Warranty on tool  
2 Year Limited Warranty on Battery and Charger



**Intertek**  
3042597  
JD517120

**READ ALL INSTRUCTIONS BEFORE FIRST USE.  
KEEP THIS MANUAL FOR FUTURE REFERENCE.  
KEEP AWAY FROM CHILDREN.**

Maximum initial battery voltage (measured without a load) is 20 volts. Nominal voltage is 18 volts.



**WEAR CSA APPROVED  
EYE PROTECTION**



**WEAR EAR  
PROTECTION**



**WEAR FACE  
PROTECTION**

## ***PRODUCT SPECIFICATIONS***

<b>20V MAX AIR COMPRESSOR KIT</b>	
Working Pressure	10.4 bar/150 psi
Air Flow Rate	0.5 CFM (14l/min)
Weight	2.6 lbs. (1.2kg)
Battery	20V 2.0Ah Li-ion (Maximum charged battery voltage, measured without load is 20V with a nominal value of 18V)
Charger	Up to 75 minutes
Replacement Battery	5350-547
Replacement Charger Assembly	5350-013

### **NEED ASSISTANCE?**

Call us on our toll-free customer support line:  
1-866-349-8665 (Monday through Friday 9am – 5pm Eastern Standard Time)

- Technical questions
- Replacement parts
- Parts missing from package

**TABLE OF CONTENTS**

Product Specifications .....	1
Table of Contents .....	2
General Safety Warnings .....	3
Eye, Ear, Lung Protection .....	3
Electrical Safety .....	3
Power Tool Safety.....	4
Work Area Safety .....	4
Electrical Safety .....	4
Personal Safety .....	5
Specific safety rules .....	5
Power Tool Use and Care .....	6
Battery Tool Use and Care .....	7
Service .....	7
Charger Safety .....	8
Battery Pack Recycling .....	9
Symbols .....	9-10
Know Your 20V Inflator.....	11
Air Hose .....	11
Know Your Battery .....	12
Checking the Battery Charge Status .....	12
Assembly and Operating .....	12
Charging the Battery Pack .....	12
Installing the Battery Pack in the Inflator .....	13
Using the Inflator.....	14
Turning Inflator On/Off .....	14
Installing the Air Hose .....	14
Installing an Adapter into the Air Hose .....	15
Pressure Gauge .....	15
Inflating a Tire.....	16
Inflating Sports Balls .....	17
Inflating Toys, Mattresses Etc. ....	17
Maintenance .....	17
Lubrication .....	18
Lithium-Ion Battery Performance .....	18
Lithium-Ion Battery Maintenance .....	18
Battery Pack Removal and Preparation for Recycling .....	18
Exploded View .....	19
Parts List .....	20
Warranty .....	21

## GENERAL SAFETY WARNINGS

### WARNING

Before using this tool or any of its accessories, read this manual and follow all Safety Rules and Operating Instructions. The important precautions, safeguards and instructions appearing in this manual are not meant to cover all possible situations. It must be understood that common sense and caution are factors which cannot be built into the product.

### EYE, EAR, LUNG PROTECTION

SYMBOL	MEANING
<b>DANGER</b> 	<p><b>ALWAYS WEAR EYE PROTECTION THAT CONFORMS WITH CSA Z94.3 or ANSI SAFETY STANDARD Z87.1</b></p> <p>FLYING DEBRIS can cause permanent eye damage. Prescription eyeglasses ARE NOT a replacement for proper eye protection. The usage of a safety standard compliant face shield placed over proper safety glasses or goggles can reduce the risk of facial injury.</p> <p><b>Non-compliant eyewear can cause serious injury if broken during the operation of a power tool.</b></p>
<b>WARNING</b> 	<p>Use hearing protection, particularly during extended periods of operation of the tool, or if the operation is noisy.</p>
<b>WARNING</b> 	<p><b>WEAR A DUST MASK THAT IS DESIGNED TO BE USED WHEN OPERATING A POWER TOOL IN A DUSTY ENVIRONMENT.</b></p> <p>Dust that is created by power sanding, sawing, grinding, drilling, and other construction activities may contain chemicals that are known to cause cancer, birth defects, or other genetic abnormalities. These chemicals include:</p> <ul style="list-style-type: none"> <li>● Lead from lead-based paints</li> <li>● Crystalline silica from bricks, cement, and other masonry products</li> <li>● Arsenic and chromium from chemically treated lumber</li> </ul> <p>The level of risk from exposure to these chemicals varies, according to how often this type of work is performed. In order to reduce exposure to these chemicals, work in a well-ventilated area, and use approved safety equipment, such as a dust mask that is specifically designed to filter out microscopic particles.</p>

## ***ELECTRICAL SAFETY***

### **WARNING**

To avoid electrical hazards, fire hazards or damage to the tool, use proper circuit protection.

This tool is wired at the factory for 120 VOLTAC operation. It must be connected to a 120 VOLTAC, 15 A circuit that is protected by a time-delayed fuse or circuit breaker. To avoid shock or fire, replace power cord immediately if it is worn, cut or damaged in any way.

### **WARNING**

Ventilation openings in batteries and chargers must always be open to allow cooling air to circulate freely. Air vents that are blocked, restricted or covered may result in the battery or charger overheating. Overheating may lead to damage to the tool or cause a fire, resulting in possible serious injury.

## ***POWER TOOL SAFETY***

### **WARNING**

Read all safety warnings and instructions. Failure to follow the warnings and instructions may result in electric shock, fire and/or serious injury.

Save all warnings and instructions for future reference.

### **WORK AREA SAFETY**

Keep work area clean and well lit. Cluttered or dark areas invite accidents.

Do not operate power tools in explosive atmospheres, such as in the presence of flammable liquids, gases or dust. Power tools create sparks which may ignite the dust or fumes.

Keep children and bystanders away while operating a power tool. Distractions can cause you to lose control.

### **ELECTRICAL SAFETY**

Power tool plugs must match the outlet. Never modify the plug in any way.

Do not expose power tools to rain or wet conditions. Water entering a power tool will increase the risk of electric shock.

Avoid body contact with earthed or grounded surfaces such as pipes, radiators, ranges and refrigerators. There is an increased risk of electric shock if your body is earthed or grounded.

Do not expose power tools to rain or wet conditions. Water entering a power tool will increase the risk of electric shock.

Do not abuse the cord. Never use the cord for carrying, pulling or unplugging the power tool. Keep cord away from heat, oil, sharp edges or moving parts. Damaged or entangled cords increase the risk of electric shock.

When operating a power tool outdoors, use an extension cord suitable for outdoor use.

Use of a cord suitable for outdoor use reduces the risk of electric shock.

If operating a power tool in a damp location is unavoidable, use a residual current device (RCD) protected supply. Use of a ground fault circuit interrupter (GFCI) reduces the risk of electric shock.

## PERSONAL SAFETY

Stay alert, watch what you are doing and use common sense when operating a power tool. Do not use a power tool while you are tired or under the influence of drugs, alcohol or medication. A moment of inattention while operating power tools may result in serious personal injury.

Use personal protective equipment. Always wear eye protection. Protective equipment such as dust mask, non-skid safety shoes, hard hat, or hearing protection used for appropriate conditions will reduce personal injuries.

Prevent unintentional starting. Ensure the switch is in the OFF position before installing the battery pack, picking up or carrying the tool. Carrying power tools with your finger on the switch or energizing power tools that have the switch on invites accidents.

Remove any adjusting key or wrench before turning the power tool on. A wrench or a key left attached to a rotating part of the power tool may result in personal injury.

Do not overreach. Keep proper footing and balance at all times. This enables better control of the power tool in unexpected situations.

Dress properly. Do not wear loose clothing or jewellery. Keep your hair, clothing and gloves away from moving parts. Loose clothes, jewellery or long hair can be caught in moving parts.

If devices are provided for the connection of dust extraction and collection facilities, ensure these are connected and properly used. Use of dust collection can reduce dust-related hazards.

## SPECIFIC SAFETY RULES

**WARNING:** Know your inflator. Do not plug in the charger until you have read and understand this Instruction Manual. Learn the tool's applications and limitations, as well as the specific potential hazards related to this tool. Following this rule will reduce the risk of electric shock, fire, or serious injury.

Always wear eye protection. Any power tool can throw foreign objects into your eyes and cause permanent eye damage. ALWAYS wear safety goggles (not glasses) that comply with ANSI safety standard Z87.1. Everyday glasses have only impact resistant lenses. They ARE NOT safety glasses.



**WARNING:** Glasses or goggles not in compliance with ANSI Z87.1 could cause serious injury when they break.

**⚠ DANGER:** This tool is not a toy and should be used only by a person who has been trained in the dangers of compressed air. Improper use of this tool could result in serious injury.

**⚠ DANGER:** Never point the inflator in the direction of a person, particularly toward the face. The compressed air could prevent permanent eyesight or hearing damage.

Always check the “maximum inflation pressure” of the item you intend to inflate. Inflate the item to the recommended pressure. Under inflation will affect the performance of the item. Over inflation will damage the item.

When inflating automotive tires, always verify the final inflation pressure with a tire pressure gauge.

## ***POWER TOOL USE AND CARE***

Do not force the power tool. Use the correct power tool for your application. The correct power tool will do the job better and safer at the rate for which it was designed.

Do not use the power tool if the switch does not turn it on and off. Any power tool that cannot be controlled with the switch is dangerous and must be repaired.

Disconnect the plug from the power source and/or the battery pack from the power tool before making any adjustments, changing accessories, or storing power tools. Such preventive safety measures reduce the risk of starting the power tool accidentally.

Store idle power tools out of the reach of children and do not allow persons unfamiliar with the power tool or these instructions to operate the power tool. Power tools are dangerous in the hands of untrained users.

Maintain power tools. Check for misalignment or binding of moving parts, breakage of parts and any other condition that may affect the power tool's operation. If damaged, have the power tool repaired before use. Many accidents are caused by poorly maintained power tools.

Keep cutting tools sharp and clean. Properly maintained cutting tools with sharp cutting edges are less likely to bind and are easier to control.

Use the power tool, accessories and tool bits etc. in accordance with these instructions, taking into account the working conditions and the work to be performed. Use of the power tool for operations different from those intended could result in a hazardous situation.

Hold power tool by insulated gripping surfaces, because the blade may contact its own cord. Cutting a "live" wire may make exposed metal parts of the tool "live" and could give the operator an electric shock.

## **BATTERY TOOL USE AND CARE**

Recharge only with the charger specified by the manufacturer. A charger that is suitable for one type of battery pack may create a risk of fire when used with another battery pack.

Use power tools only with specifically designated battery packs. Use of any other battery packs may create a risk of injury and fire.

When battery pack is not in use, keep it away from other metal objects, like paper clips, coins, keys, nails, screws or other small metal objects that can make a connection from one terminal to another. Shorting the battery terminals together may cause burns or a fire.

Under abusive conditions, liquid may be ejected from the battery; avoid contact. If contact accidentally occurs, flush with water. If liquid contacts eyes, additionally seek medical help. Liquid ejected from the battery may cause irritation or burns.

### **SERVICE**

Have your power tool serviced by a qualified repair person using only identical replacement parts. This will ensure that the safety of the power tool is maintained.

#### **WARNING**

Know your inflator. Do not plug in the charger until you have read and understand this Instruction Manual. Learn the tool's applications and limitations, as well as the specific potential hazards related to this tool. Following this rule will reduce the risk of electric shock, fire, or serious injury.



Always wear eye protection. Any power tool can throw foreign objects into your eyes and cause permanent eye damage. **ALWAYS** wear safety goggles (not glasses) that comply with ANSI safety standard Z87.1. Everyday glasses have only impact resistant lenses. They **ARE NOT** safety glasses.

 **WARNING: Glasses or goggles not in compliance with ANSI Z87.1 could cause serious injury when they break.**

#### **DANGER**

This tool is not a toy and should be used only by a person who has been trained in the dangers of compressed air. Improper use of this tool could result in serious injury.

#### **DANGER**

Never point the inflator in the direction of a person, particularly toward the face. The compressed air could result in permanent eyesight or hearing damage. Always check the "maximum inflation pressure" of the item you intend to inflate. Inflate the item to the recommended pressure. Under inflation will affect the performance of the item. Over inflation will damage the item.

When inflating automotive tires, always verify the final inflation pressure with a tire pressure gauge.



## ***BATTERY AND CHARGER SAFETY***

### **WARNING**

Only use the charger supplied with this inflator to charge the 20V battery. Charging any other batteries may damage the charger and possibly cause serious injury.

The batteries for this tool are contained within the battery pack housing. Never attempt to open the battery pack for any reason. If the battery pack breaks or cracks, immediately discontinue use and do not recharge.

Do not charge the battery if the battery housing is wet or shows any evidence of corrosion.

A small leakage from the battery may occur under extreme usage, charging or temperature conditions. This does not indicate a failure. However, if the outer seal is broken and this leakage gets on your skin, follow these steps:

1. Wash immediately with soap and water.
2. Neutralize with a mild acid such as lemon juice or vinegar.
3. If liquid gets into your eyes, flush immediately with clean water for a minimum of 10 minutes and seek medical attention.

NOTE: The battery liquid is slightly acidic.

Do not incinerate the battery. It can explode in a fire.

Do not use an extension cord. Plug the charger cord directly into an electrical outlet.

Use the charger only in a standard 120V, 60 Hz electrical outlet.

Do not use the charger in wet or damp conditions. It is intended for indoor use only. Do not use the charger near sinks or tubs. Do not immerse the charger in water.

Do not allow the cord to hang over the edge of a table or counter or touch hot surfaces. The charger should be placed away from sinks and hot surfaces.

Do not use the charger to charge any batteries other than this 20V inflator battery. Other batteries may explode.

Do not operate charger if the cord or plug is damaged. Replace the damaged cord and plug immediately.

Do not operate the charger if it has received a sharp blow, been dropped or otherwise damaged in any way. Have a qualified technician examine the charger and repair it if necessary. Do not disassemble the charger.

Do NOT charge the batteries when the work area or the battery temperature is at or below 41° F/ 5° C or above 105° F/ 40.5° C.

Unplug the charger when not in use and before cleaning or maintenance.

## BATTERY PACK RECYCLING



To preserve our natural resources, please recycle or dispose of batteries properly.

The batteries charged by this charger may contain chemicals and metals that are harmful to the environment. Never dispose of re-chargeable batteries in your normal household garbage or in landfill sites as they will add to the pollution of the environment.








Consult your local waste authority for information regarding additional available recycling and disposal options.

## SYMBOLS

### WARNING

Some of the following symbols may appear on the inflator. Study these symbols and learn their meaning. Proper interpretation of these symbols will allow for more efficient and safer operation of this tool.

V	Volts		Three-phase alternating current with neutral
A	Amperes		Direct current
Hz	Hertz	$n_o$	No load speed
W	Watts		Alternating or direct current
kW	Kilowatts		Class II construction
$\mu$ F	Microfarads		Splash-proof construction
L	Liters		Watertight construction
kg	Kilograms		Protective grounding at grounding terminal, Class I tools
H	Hours	.../min	Revolutions or reciprocations per minute
$N/cm^2$	Newtons per square centimeter	$\emptyset$	Diameter
Pa	Pascals	0	Off position

OPM	Oscillations per minute		Arrow
MIN	Minutes		Warning symbol
S	Seconds		Wear your safety glasses
 or ac.	Alternating current		Wear a dust mask
	Three-phase alternating current		Wear hearing protection



This symbol designates that this tool is listed with Canadian and U.S. requirements by ETL Testing Laboratories, Inc. Conforms to UL Std. 60745-1 and 60745-2-11. Certified to CAN/CSA Std. C22.2 No. 60745-1 and 60745-2-11.

**WARNING: Know your inflator. Do not plug in the charger until you have read and understand this Instruction Manual. Learn the tool’s applications and limitations, as well as the specific potential hazards related to this tool.**

Following this rule will reduce the risk of electric shock, fire, or serious injury.

Always wear eye protection. Any power tool can throw foreign objects into your eyes and cause permanent eye damage. ALWAYS wear safety goggles (not glasses) that comply with ANSI safety standard Z87.1. Everyday glasses have only impact resistant lenses. They ARE NOT safety glasses.



**WARNING: Glasses or goggles not in compliance with ANSI Z87.1 could cause serious injury when they break.**

**▲ DANGER:** This tool is not a toy and should be used only by a person who has been trained in the dangers of compressed air. Improper use of this tool could result in serious injury.

**▲ DANGER:** Never point the inflator in the direction of a person, particularly toward the face. The compressed air could prevent permanent eyesight or hearing damage.

Always check the “maximum inflation pressure” of the item you intend to inflate. Inflate the item to the recommended pressure. Under inflation will affect the performance of the item. Over inflation will damage the item.

When inflating automotive tires, always verify the final inflation pressure with a tire pressure gauge.

## KNOW YOUR 20V INFLATOR

### AIR HOSE

NOTES: There is no adapter required for inflating “standard” tires on automobiles, bicycles, etc. The hose end will screw directly into the tire valve stem.



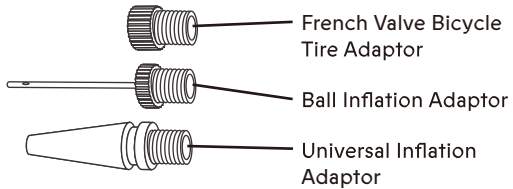
Battery Charger 5350-013



Battery 5350-547



Pressure Gauge



## KNOW YOUR BATTERY

### CHECKING THE BATTERY CHARGE STATUS

The level of charge remaining in the battery can be checked by using the battery LED power indicator that is contained on the end of the battery.

NOTES: The battery charge remaining may be checked while the battery is installed in the tool with the ON/OFF switch turned OFF. It may also be checked while the battery is removed from the tool. DO NOT check the battery charge remaining while the battery is in the charger. You will get a false reading and you may also damage the battery status system.

1. Press and hold the battery status button located on the end of the battery.
2. One or more of the Three LED lights in the LED window will come ON to indicate the amount of charge that is remaining in the battery as follows:

1 light (Red light ON)	2 lights (Red and orange)	3 lights (Red/Orange/ Green ON)
1/3 or less	1/3 - 2/3	2/3 -Fully charged

3. Release the battery status button to turn off.

## ASSEMBLY AND OPERATING

### CHARGING THE BATTERY PACK

1. Place the battery charger (1) in a dry location near a 110-120V 60 Hz electrical outlet (Fig. 2).

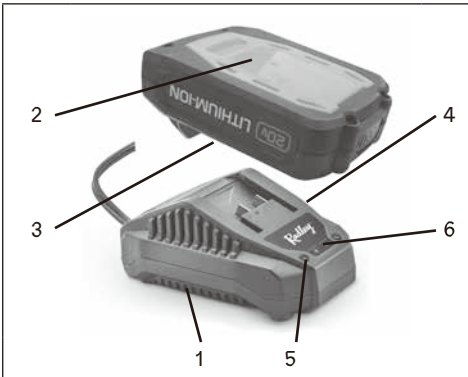


Fig. 2



Fig. 3

2. Plug the battery charger into the outlet and make sure the green LED indicator light (5) comes ON. If it does not, refer to the chart (Fig.3) to identify the problem.
3. Turn the battery (2) upside down and slide it onto the charger.

NOTE: Make sure the grooves (3) in the sides of the battery slide over the matching tabs

on the charger (4) until the battery latch “clicks” into place.

**NOTES:**

1. When the charger is plugged into the wall receptacle and NO battery is on the charger, the green indicator light (5) will turn ON indicating the charger is “live”.
2. When a discharged battery is installed on the charger, the green indicator light will turn OFF and the red indicator light (6) will turn ON. The red indicator light indicates the battery is being charged.
3. If the red indicator light does not come ON, check to make sure the battery pack is slid fully onto the charger and the electrical outlet is working properly.
4. See Fig. 3 below for other indicator light functions.
5. A discharged battery pack should be fully charged in approximately 70 minutes.
6. It is normal for the battery charger to hum and be warm to the touch during operation.
7. If the battery pack does not charge properly, check to make sure the electrical outlet is “live”.
8. Do not charge the batteries when the work area is or the battery temperature is at or below 41°F/5°C or above 105°F /40.5°.

***INSTALLING THE BATTERY PACK IN THE INFLATOR***

1. Remove the discharged battery park from the tool by pressing the battery release button on the rear of the battery downward and slide the battery pack out of the tool handle.
2. Slide the fully charged battery pack into the matching slots in the rear of the tool handle where the discharged battery pack has been removed.

NOTE: The battery release button will “click” into place when the battery pack is fully installed.

**WARNING**

Do not immerse battery pack in water. Sudden cooling could cause a hot battery to explode or leak.

Green Light	Red Light	Battery Inserted into Charger	Charging Status
ON	OFF	NO	Charger connected to power supply
OFF	ON	YES	Battery being charged
ON	OFF	YES	Battery fully charged
ON	OFF	YES	Battery is charged but not operational on tool. This may indicate defective / bad contact on battery or charging conditions are either too hot or too cold.

## USING THE INFLATOR

To secure the air hose to the air pump:

1. Loosen the adaptor locking collar by turning it counter-clockwise.
2. Insert the air hose into the adaptor locking collar, and tighten clockwise.
3. Attach the chosen adapter to the air hose and screw clockwise until it is securely in place.

### **WARNING**

Improperly attached hoses or accessories can become detached under pressure and cause serious injury. Possible air leaks can cause faulty pressure readings. Make sure all connections are tightly secured.

## TURNING INFLATOR ON/OFF

1. Squeeze the trigger to start the air pump.
2. During use, check the pressure gauge for the desired pressure.
3. When desired pressure is achieved release the trigger to stop the air pump.  
NEVER over inflate as damage or injury may occur.

NOTE: Maximum PSI for this unit is 150 PSI.

NOTE: It is recommended that a final pressure check is made by using a calibrated pressure gauge.

This inflator can be used to inflate many different inflatable items such as:

- Automotive tires
- Inflatable sports balls
- Trailer tires
- Inflatable toys
- Bicycle tires
- Air mattresses

### **WARNING**

When inflating automotive tires, always inflate the tires in accordance with the pressures recommended in the vehicle owner's manual. Always verify the final inflation pressure with a tire pressure gauge.

### **WARNING**

Always check the "maximum inflation pressure" of the item you intend to inflate. Inflate the item to the recommended pressure. Under inflation will affect the performance of the item. Over inflation will damage the item.

## INSTALLING THE AIR HOSE

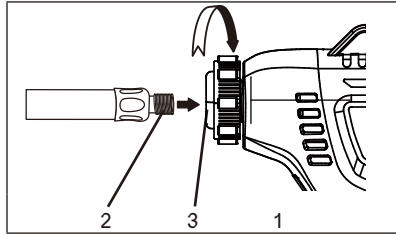
The air hose must be installed onto the inflator as follows:

1. Rotate the air hose retaining collar (1) counter clockwise approximately 1 full turn (Fig. 4).
2. Insert the threaded end of the air hose (2) into the rubber seal in the center of the (3) retaining collar.

NOTE: Make sure the threaded portion of the air hose is fully inserted into the rubber seal.

3. Rotate the retaining collar clockwise until the air hose threaded end is securely fastened in the rubber seal.

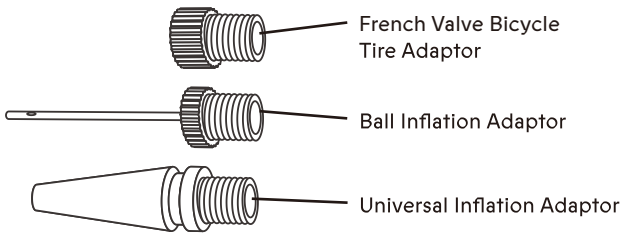
NOTE: Hand tighten only. Using pliers may damage the retaining collar threads.



**Fig. 4**

## INSTALLING AN ADAPTER INTO THE AIR HOSE

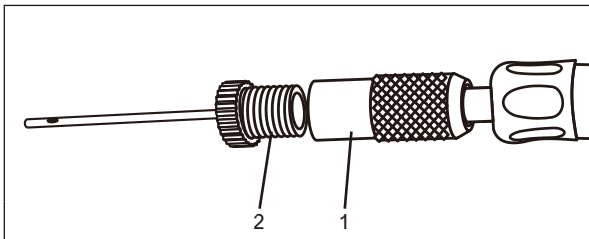
There are THREE adaptors included with the inflator:



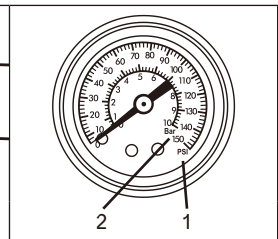
1. Thread the appropriate adaptor (1) clockwise into the brass coupling (2) in the end of the air hose.

NOTES: a) If there is already an adaptor installed in the brass coupling, turn the adaptor counter clockwise to remove it. b) Make sure the adaptor is not cross threaded as this will damage the threads.

2. Hand tighten the adaptor into the brass coupling to avoid damaging the threads.



**Fig. 5**



**Fig. 6**

## PRESSURE GAUGE

The pressure gauge will indicate the air pressure in the item you are inflating. The OUTER numbers (1) indicate "PSI" (pounds per square inch) (Fig. 6). The INNER numbers (2) indicate "Bar" (atmospheres).



 **WARNING**

For safety reasons, the operator must read the sections of this Owner's Manual entitled "GENERAL SAFETY WARNINGS", "POWER TOOL SAFETY", "SPECIFIC SAFETY RULES", "BATTERY & CHARGER SAFETY" and "SYMBOLS" before using this inflator.

Verify the following every time the inflator is used:

1. Safety glasses, safety goggles, or face shield is being worn.
2. You are aware of the maximum inflation pressure of the item you are about to inflate.

Failure to observe these safety rules will significantly increase the risk of injury.

Before attempting to inflate any inflatable item, it is always best to make sure the battery is fully charged. Large volume items such as a car tire require a large volume of air. High pressure bicycle tires require very high air pressure. In both instances, starting the inflation process with a fully charged battery will ensure you can complete the inflation without running out of battery power.

**INFLATING A TIRE**

1. Install the air hose into the inflator.
2. Remove any adaptor from the air hose.
3. Install a freshly charged battery pack into the inflator.
4. Remove the valve cap from the tire valve stem.
5. Screw the brass tire inflator coupling onto the tire valve stem.

NOTE: Firmly hand tighten only.

6. Squeeze the trigger switch on the inflator to start inflating the tire.

NOTE: The pressure gauge needle on the pressure gauge located at the rear of the inflator will vibrate back and forth as the inflator is inflating the tire. Stop the inflator periodically to check the static pressure of the tire.

7. Once the tire has reached the desired pressure, turn the inflator OFF and quickly remove the tire inflator coupling by turning it counter clockwise.

NOTE: Always verify the tire pressure after it is fully inflated with a tire gauge.

8. Once the tire pressure has been verified make sure you replace the valve cap on the tire valve stem.

Standard North American tires can all be inflated in a similar way. If using the inflator to inflate high pressure bicycle tires with a French tire valve, install the French valve adaptor into the air hose.

NOTE: It is recommended that the air hose remain installed in the inflator during storage to avoid constantly having to remove and re-install it for various inflation activities. Simply change the adaptor as necessary.

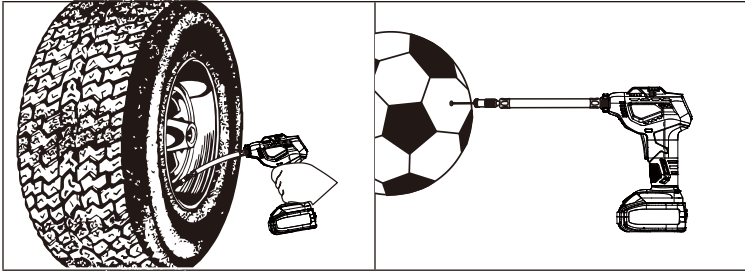


Fig. 7

Fig. 8

## INFLATING SPORTS BALLS

1. Install the ball inflation adaptor.
2. Apply silicone or glycerin oil in and around the ball valve (1) and on the inflation needle and insert the needle into the ball (Fig. 8).

NOTE: This is important to preserve the valve and to make it easier to insert the needle into the ball valve.

3. Start the inflator and monitor the pressure similar to inflating a tire (Fig. 7).

NOTE: Check the ball pressure frequently to avoid over inflation and damage to the ball.

## INFLATING TOYS, MATTRESSES ETC.

1. Install the universal inflation adapter.
2. Insert the universal inflation adapter into the inflation valve of the toy or mattress.
3. Start the inflator and monitor the pressure similar to inflating a tire (Fig. 7).

NOTE: Check the toy or mattress pressure frequently to avoid over inflation and damage.

## MAINTENANCE

### WARNING

When servicing this tool, use only identical replacement parts. The use of any other part may create a hazard or cause product damage.

DO NOT use solvents when cleaning plastic parts. Plastics are susceptible to damage from various types of commercial solvents and may be damaged by their use. Use a clean cloth to remove dirt, dust, oil, grease etc.

### WARNING

Do not allow brake fluids, gasoline, petroleum-based products, penetrating oils, etc. to come into contact with plastic parts. They contain chemicals that can damage, weaken or destroy plastic.

DO NOT abuse power tools. Abusive practices can damage the tool and the workpiece.

** WARNING**

DO NOT attempt to modify tools or create accessories. Any such alteration or modification is misuse and could result in a hazardous condition leading to possible serious injury. It will also void the warranty.

**LUBRICATION**

All of the bearings in this tool are lubricated with a sufficient amount of high-grade lubricant for the life of the unit under normal conditions. Therefore, no further lubrication is required.

***LITHIUM-ION BATTERY PERFORMANCE***

Lithium-ion rechargeable batteries generally provide superior performance to nickel-cadmium batteries when used in power tools.

- Faster charges
- Longer battery life
- More power
- Lighter weight

Lithium-ion batteries perform best and deliver peak output power at room temperature (20° C or 68° F). When operated in lower temperatures, the battery output will be reduced, and it will NOT function below -20° C (-4° F). The output power will increase as the heat generated by the battery during use increases the internal temperature of the battery. The result is increased power as the tool is used.

**LITHIUM-ION BATTERY MAINTENANCE**

Lithium-ion batteries share many characteristics with Nickel-Cadmium batteries.

The major characteristic that is NOT shared with Nickel-Cadmium batteries is that Lithium-ion batteries do not have a “memory” and do not require to be completely discharged periodically. It is recommended that you charge your Lithium-ion batteries after each use so they will be fully charged when needed.

NOTE: A fully charged battery will lose about 2% of its charge per month during storage.

**BATTERY PACK REMOVAL AND PREPARATION FOR RECYCLING**

To preserve our natural resources, please recycle or dispose of batteries properly.

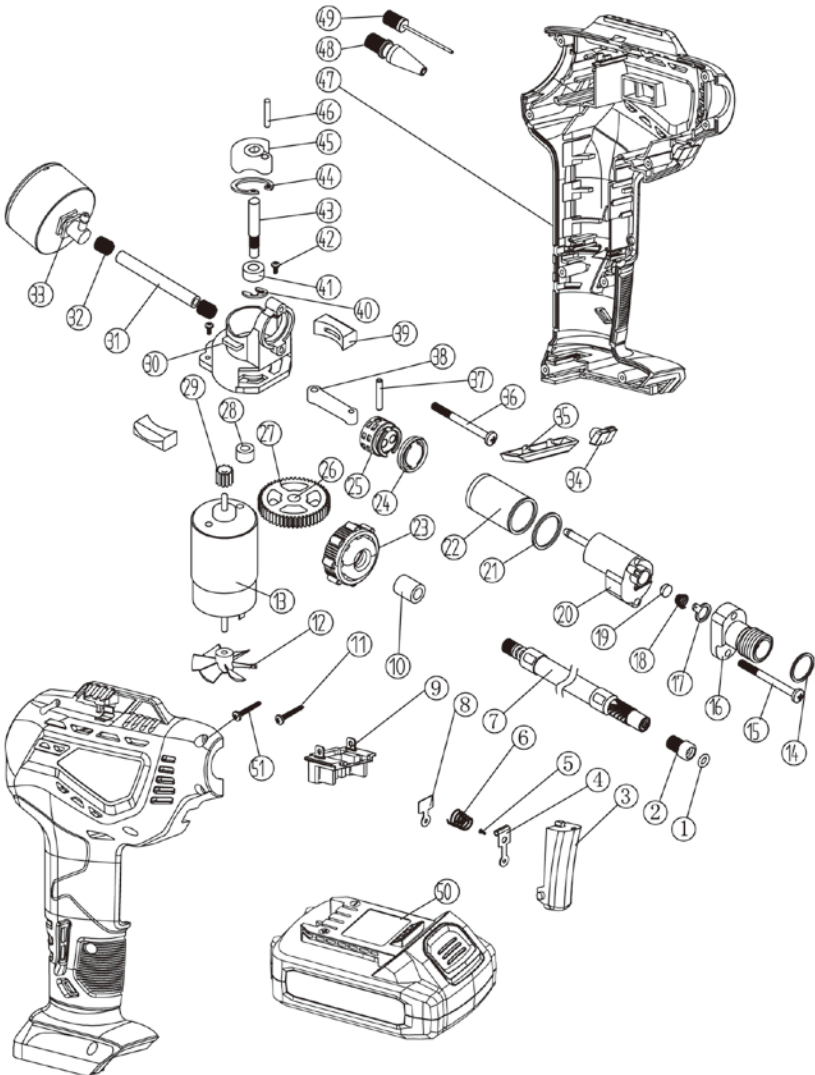
The batteries supplied with this tool may contain chemicals and metals that are harmful to the environment. Never dispose of rechargeable batteries in your normal household

Consult your local waste authority for information regarding available recycling and disposal options.

## ⚠ WARNING

If the battery pack has been removed from the tool, cover the terminals of the battery pack with electrical tape or heavy-duty adhesive tape. Never touch both terminals with metal objects and body parts, because a short circuit may result. Keep away from children. Do not attempt to destroy or disassemble battery pack or remove any of its components. Rechargeable batteries must be recycled or disposed of properly. Failure to comply with these warnings could result in fire and serious injury.

## EXPLODED VIEW



**PARTS LIST****⚠ WARNING**

When servicing use only original equipment replacement parts. The use of any other parts may create a safety hazard or cause damage to the inflator. Any attempt to repair or replace electrical parts on this inflator may create a safety hazard. For more information, please call the free helpline at 1-866-349-8665.

Always order by key number.

KEY #	PART #	PART NAME / QUANTITY	KEY #	PART #	PART NAME / QUANTITY
1	3140020014	Seal Ting /1	27	3150030003	Gear /1
2	6230010004	Presta (French) /1	28	2010080005	Bush /1
3	3120010132	Switch Button /1	29	2010180006	Motor Gear /1
4	2030190113	Contact Plate /1	30	2020010001	Gear Box /1
5	4030010136	Screw /1	31	3140020012	Small Tube /1
6	2050030020	Switch Spring /1	32	2050060016	Small Tube Spring /2
7	1150060004	Air Tube /1	33	1220060002	Pressure Gauge /1
8	2030190114	Static Contact /1	34	3110010246	Led Decorative /1
9	1180060030	Terminal Plate /1	35	3110010245	Decorative Lock /1
10	3140020013	Inlet Sealing /1	36	4020010013	Screw /1
11	4030010248	Screw /8	37	2040160016	Pin /1
12	3150010125	Fan /1	38	2010220002	Connecting Rob /1
13	1030030076	Motor /1	39	3140060006	Anti-Vibration /1
14	3140020011	Retaining Ring /1	40	4100020004	Circlip /1
15	4020010012	Screw /1	41	4010010042	Bearing /1
16	3150160012	Exhaust Port /1	42	4020010152	Screw /2
17	3140020009	Exhaust Port Sealing Ring /1	43	2040050010	Shaft /1
18	2050060015	Valve Spring /1	44	4100010011	Snap Ring /1
19	3140020010	Relief Valve /1	45	2010130005	Eccentric Wheel /1
20	2020150006	Cylinder Cover /1	46	2040160017	Eccentric Shaft /1
21	3140020008	Cylinder Sealing /1	47	3010110003	Housing /1
22	2010210002	Cylinder /1	48	6230020001	Inflatables /1
23	3120060071	Nut /1	49	6230020001	Ball Inflator /1
24	3140020150	Piston Ring /1	50	1290090019	Battery /1
25	3150230001	Piston /1	51	4030010067	Screw /1
26	2010200001	Gear Insert /1			

## ***WARRANTY***

If this Radley Tool fails due to a defect in material or workmanship within three years from the date of purchase, return it to any Home Hardware store with the original bill of sale for exchange. Two years for battery and charger. This warranty does not include expendable parts including but not limited to blades, brushes, belts, and light bulbs. This warranty covers defects in material or workmanship only. It does not cover normal wear and tear, failure due to abuse/misuse, or defects caused by careless or accidental mishandling. If this Radley product is used for commercial or rental purposes, this warranty does not apply.



# 20V MAX AIR COMPRESSOR KIT

## OWNER'S MANUAL



3 Year Limited Warranty on tool  
2 Year Limited Warranty on Battery and Charger

**Radley**<sup>®</sup>

**RADLEY TOOLS**  
ST. JACOBS, ONTARIO N0B 2N0  
© 2021 Home Hardware Stores Limited  
**1-866-349-8665**  
Customer Service/Tech Support

**6311-000**

Made in China

**3 Year  
warranty**

This Radley<sup>®</sup> product carries a three (3) year LIMITED warranty against defects in workmanship and materials. See Owner's Manual for full details.



**Intertek**

3042597  
JD517120

**READ ALL INSTRUCTIONS BEFORE FIRST USE.  
KEEP THIS MANUAL FOR FUTURE REFERENCE.  
KEEP AWAY FROM CHILDREN.**

Maximum initial battery voltage (measured without a load) is 20 volts. Nominal voltage is 18 volts.



**WEAR CSA APPROVED  
EYE PROTECTION**



**WEAR EAR  
PROTECTION**



**WEAR FACE  
PROTECTION**